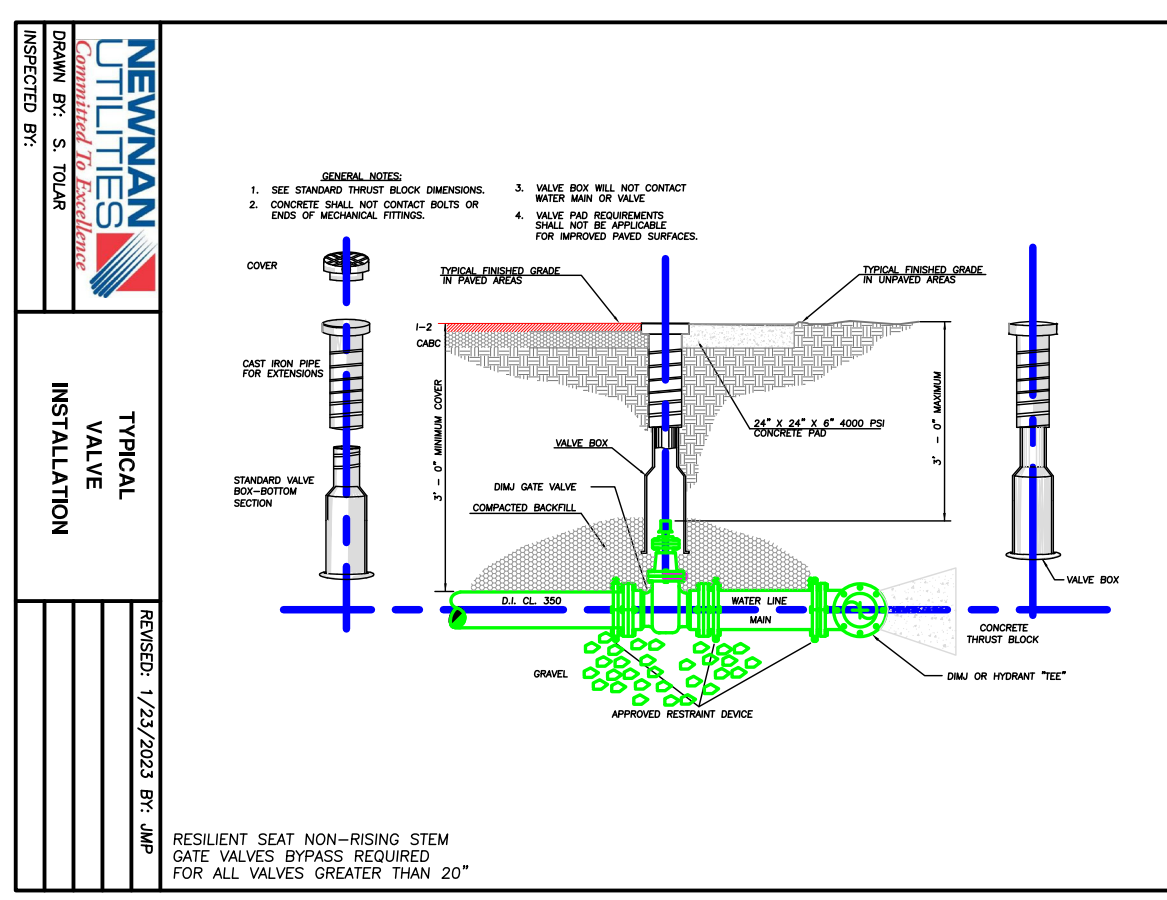
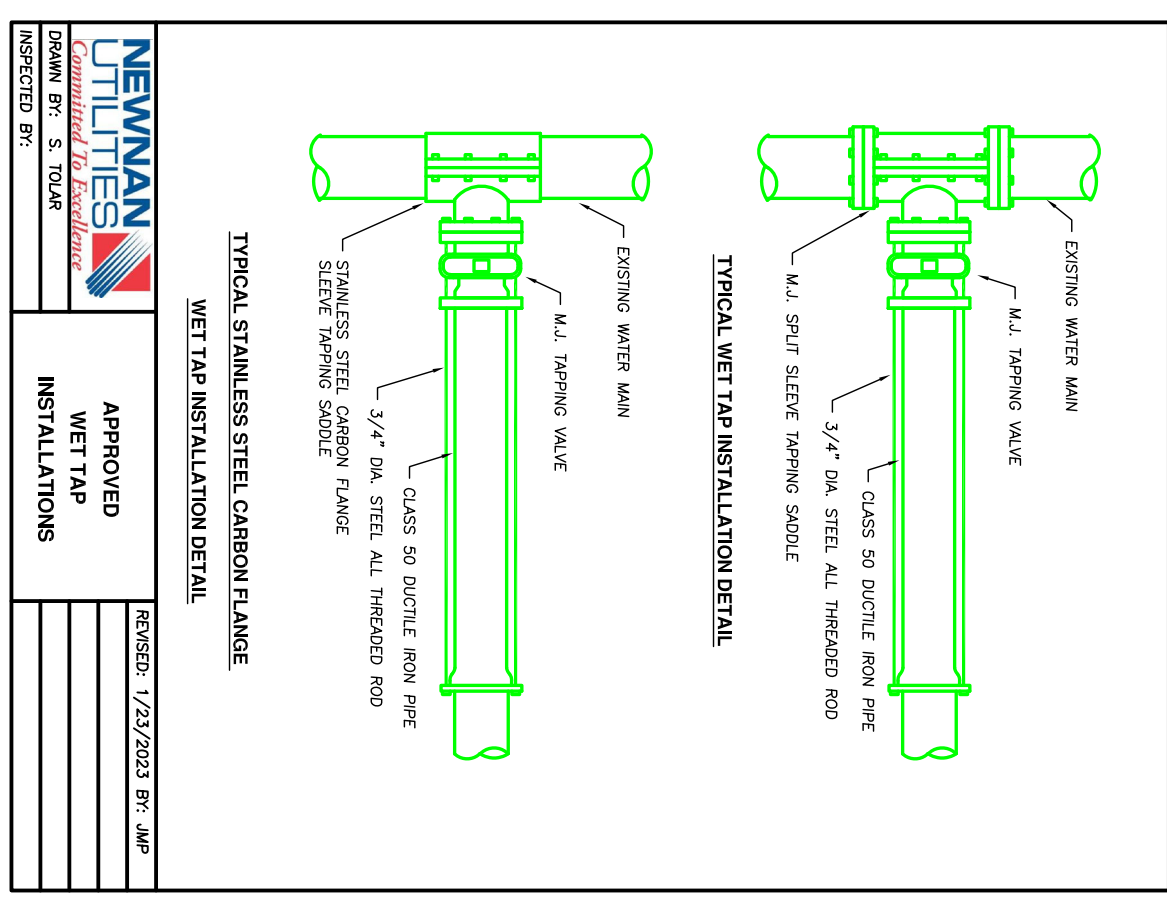


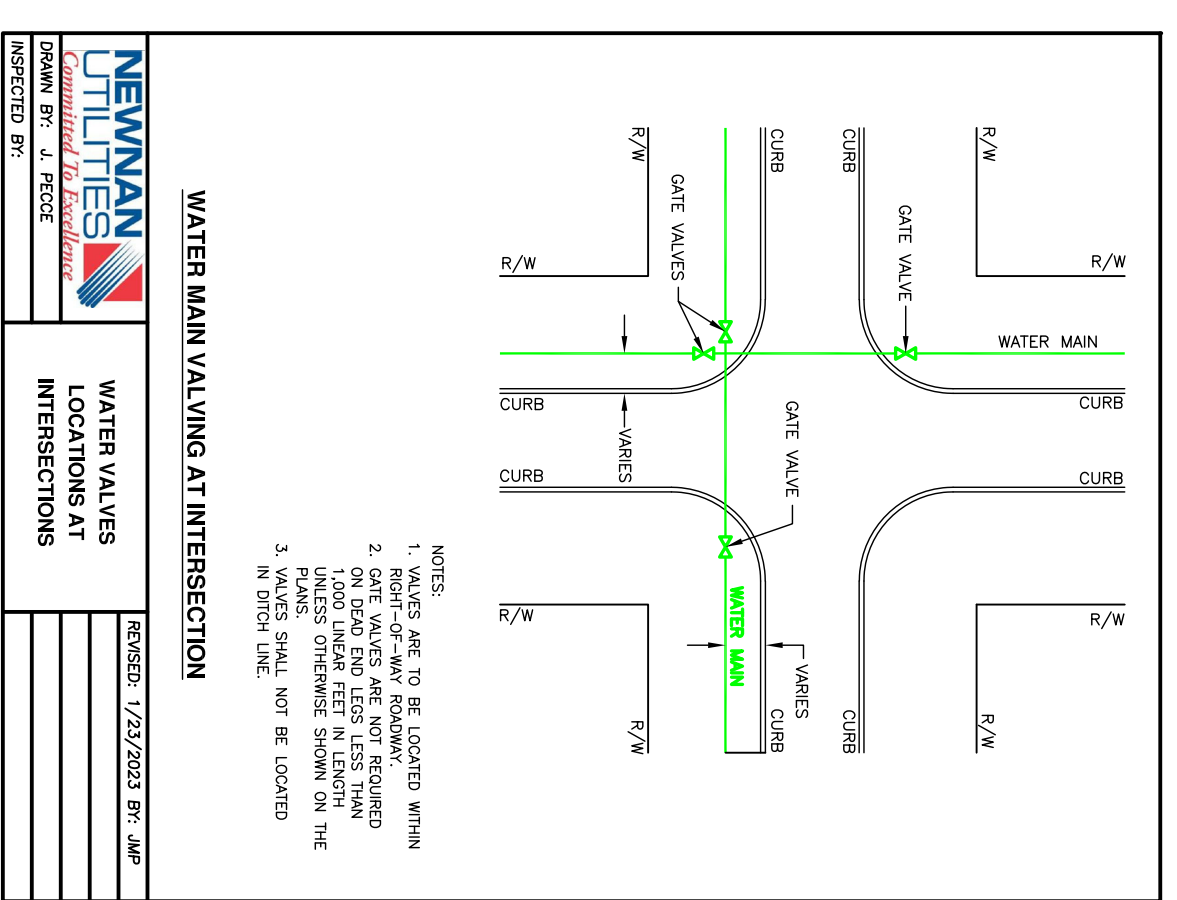
NEWMAN UTILITIES
CURB/BACK DETAIL
 DRAWN BY: S. TOLAR
 CHECKED BY:
 REVISION: 1/23/2023 BY: JMB
 SHEET NO. W-009



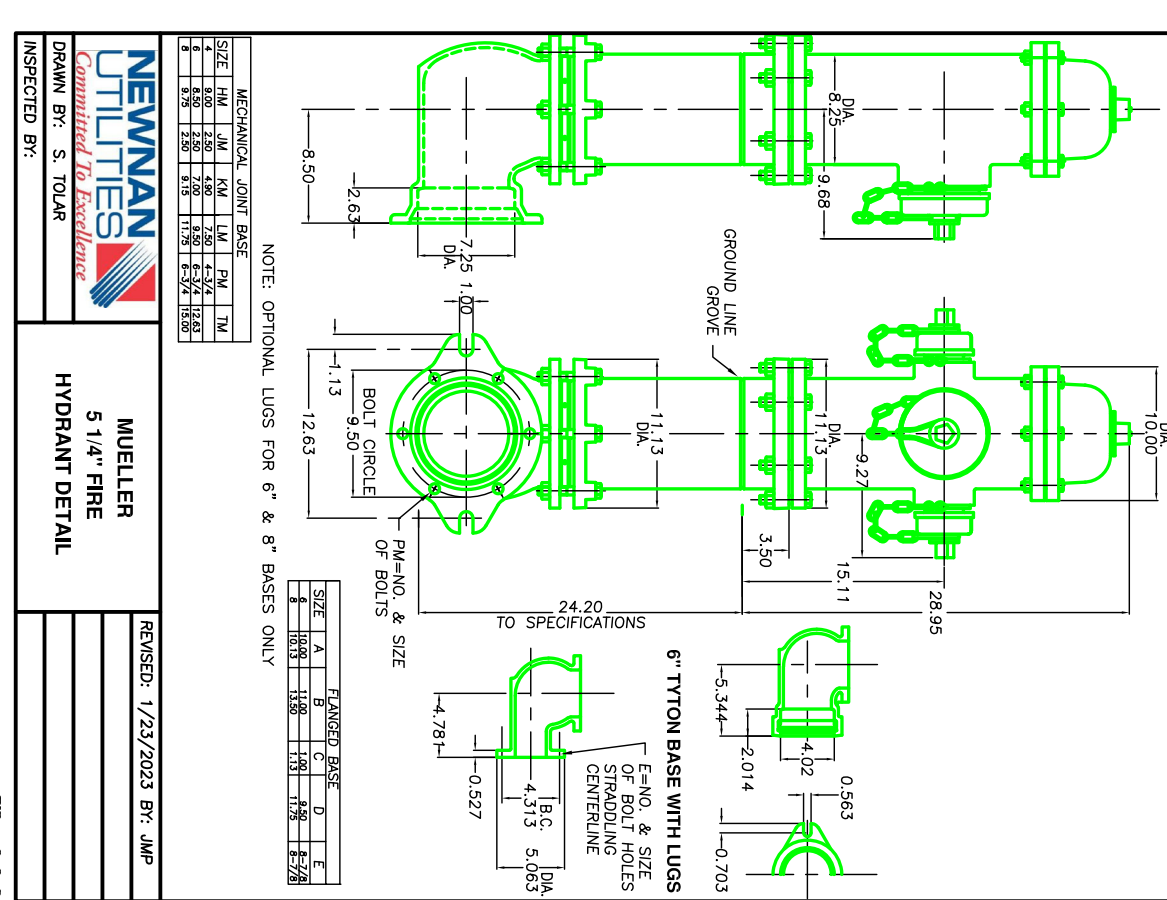
NEWMAN UTILITIES
TYPICAL VALVE INSTALLATION
 DRAWN BY: S. TOLAR
 CHECKED BY:
 REVISION: 1/23/2023 BY: JMB
 SHEET NO. W-011



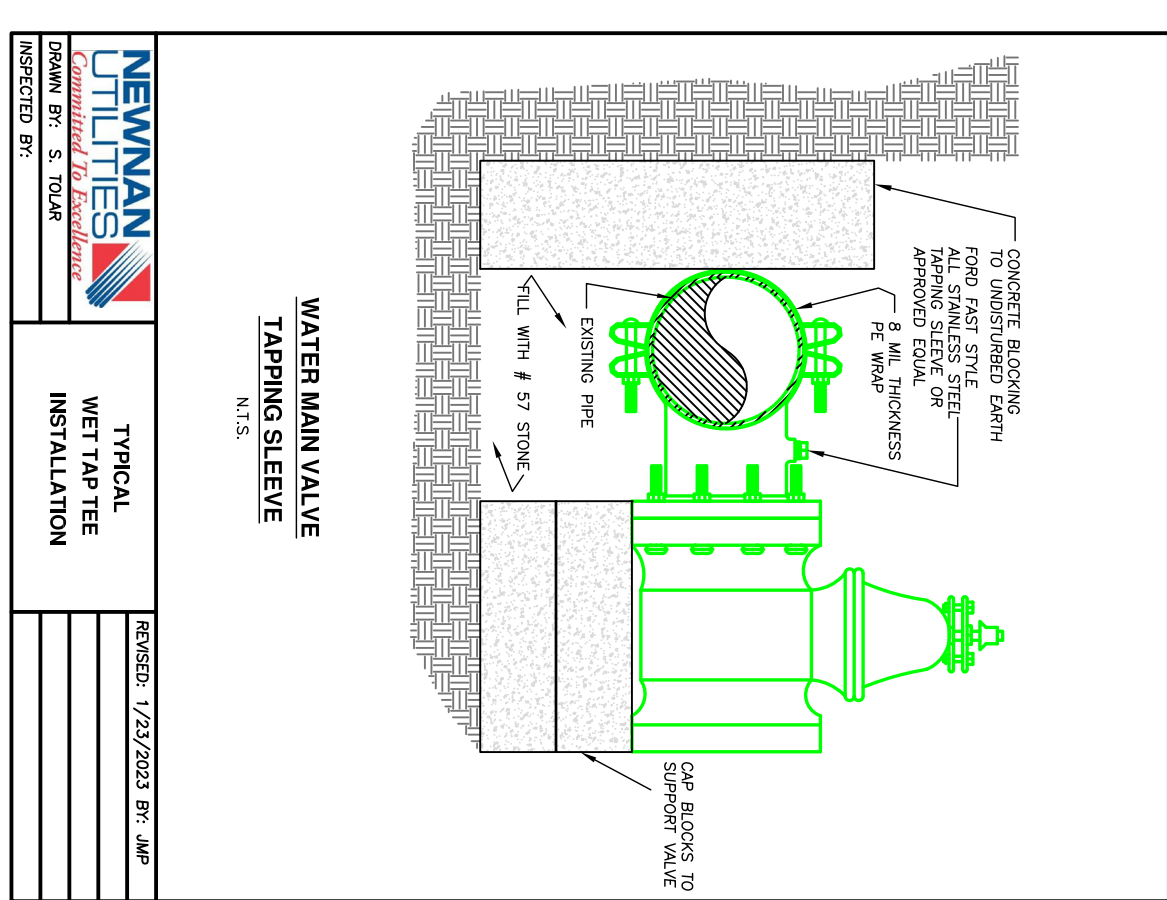
NEWMAN UTILITIES
TYPICAL WET TAP INSTALLATION
 DRAWN BY: S. TOLAR
 CHECKED BY:
 REVISION: 1/23/2023 BY: JMB
 SHEET NO. W-013



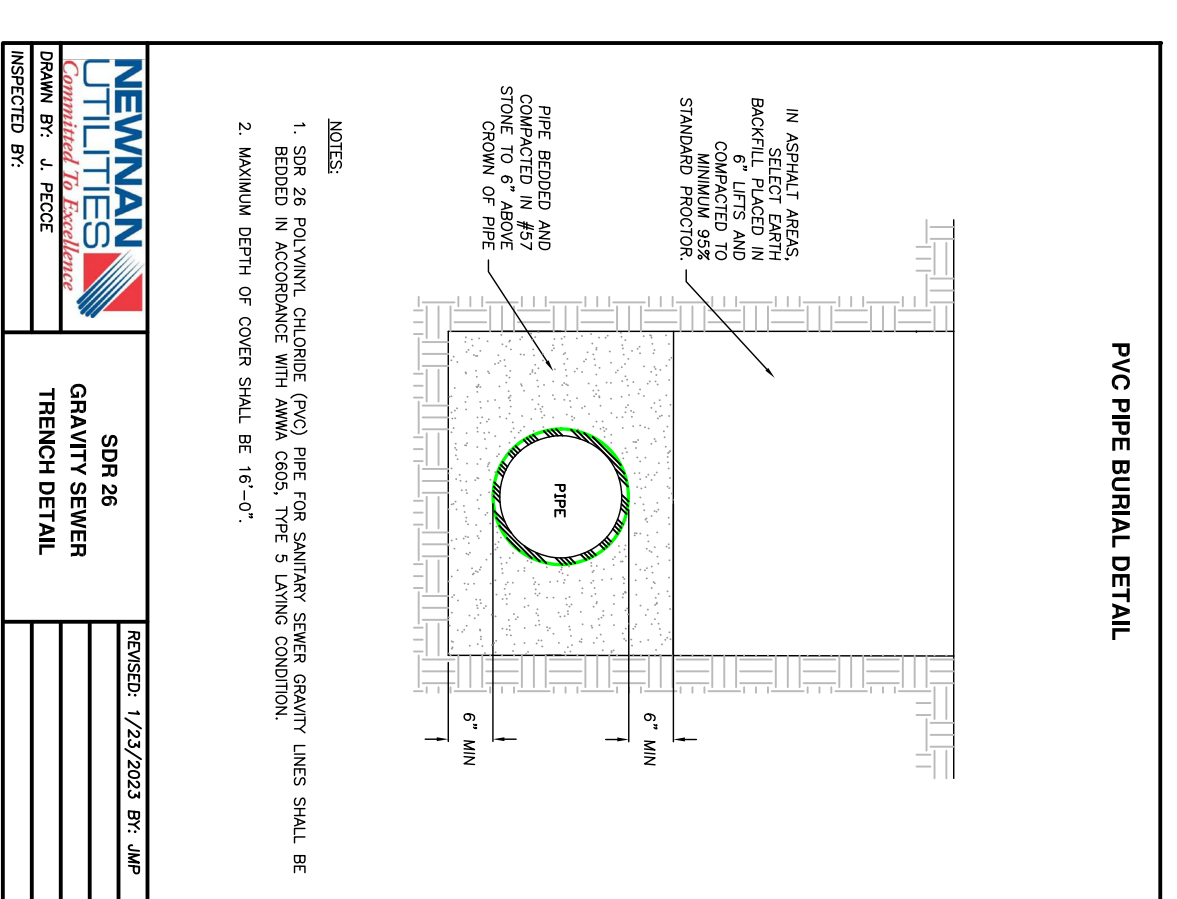
NEWMAN UTILITIES
WATER MAINS VALVING AT INTERSECTIONS
 DRAWN BY: S. TOLAR
 CHECKED BY:
 REVISION: 1/23/2023 BY: JMB
 SHEET NO. W-008



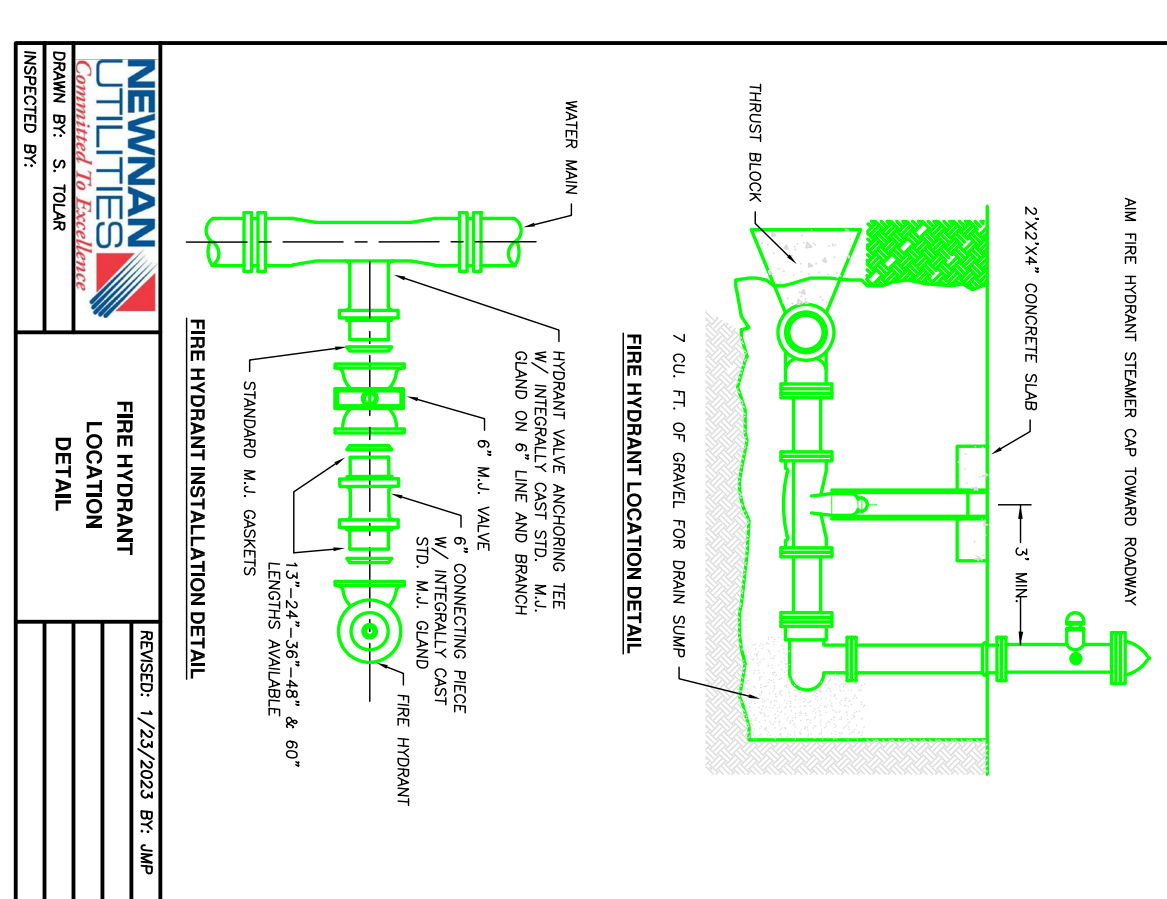
NEWMAN UTILITIES
**MULLER 5 1/2\"/>
 DRAWN BY: S. TOLAR
 CHECKED BY:
 REVISION: 1/23/2023 BY: JMB
 SHEET NO. W-006**



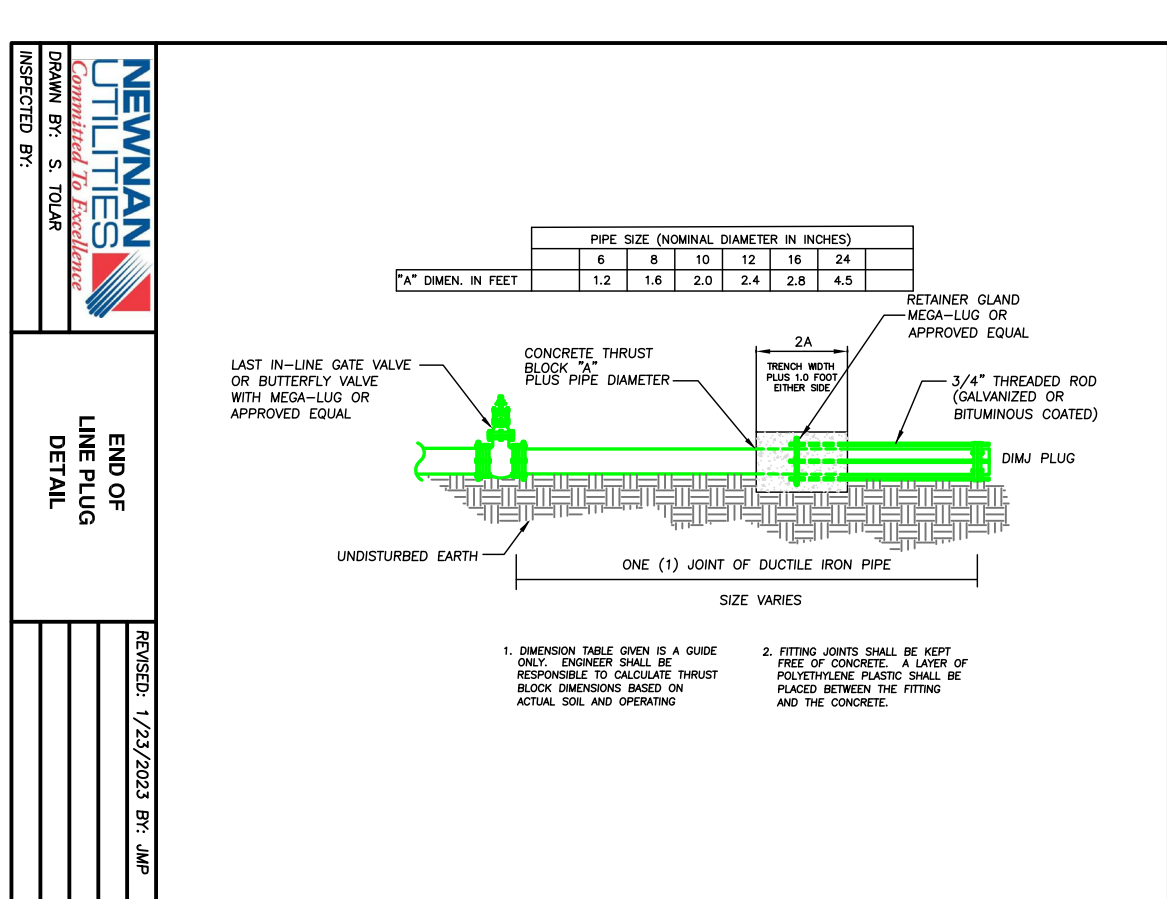
NEWMAN UTILITIES
TYPICAL WET TAP INSTALLATION
 DRAWN BY: S. TOLAR
 CHECKED BY:
 REVISION: 1/23/2023 BY: JMB
 SHEET NO. W-014



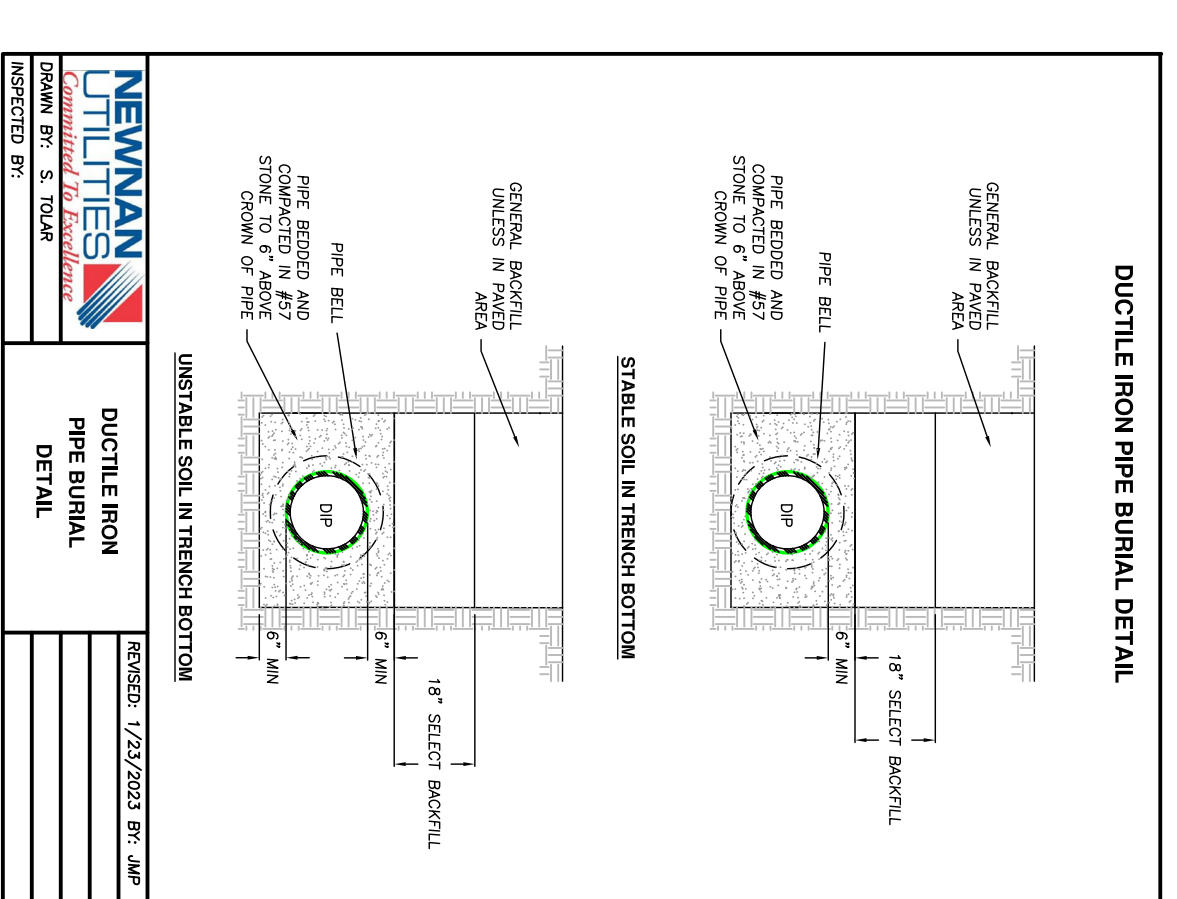
NEWMAN UTILITIES
**8\"/>
 DRAWN BY: S. TOLAR
 CHECKED BY:
 REVISION: 1/23/2023 BY: JMB
 SHEET NO. P1-001**



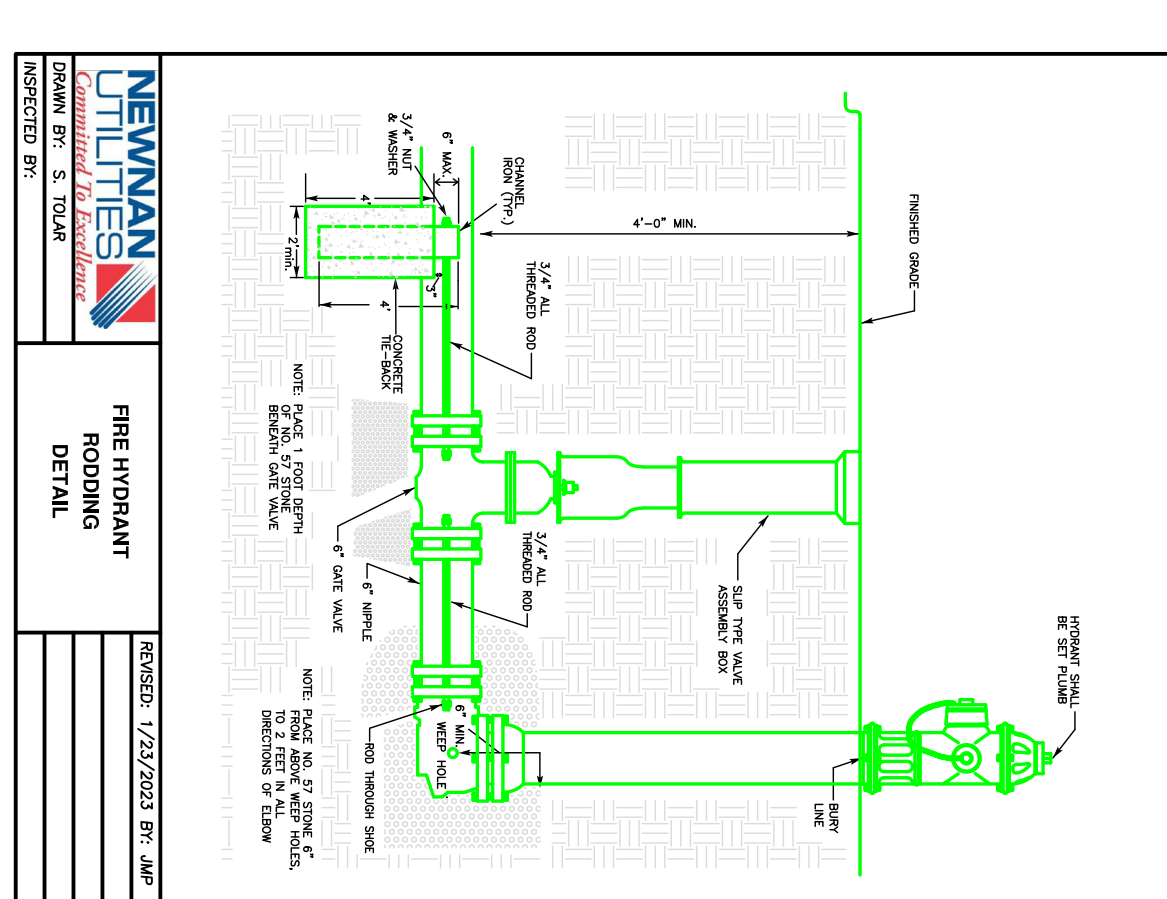
NEWMAN UTILITIES
FIRE HYDRANT LOCATION DETAIL
 DRAWN BY: S. TOLAR
 CHECKED BY:
 REVISION: 1/23/2023 BY: JMB
 SHEET NO. W-007



NEWMAN UTILITIES
END OF LINE PLUG DETAIL
 DRAWN BY: S. TOLAR
 CHECKED BY:
 REVISION: 1/23/2023 BY: JMB
 SHEET NO. W-015



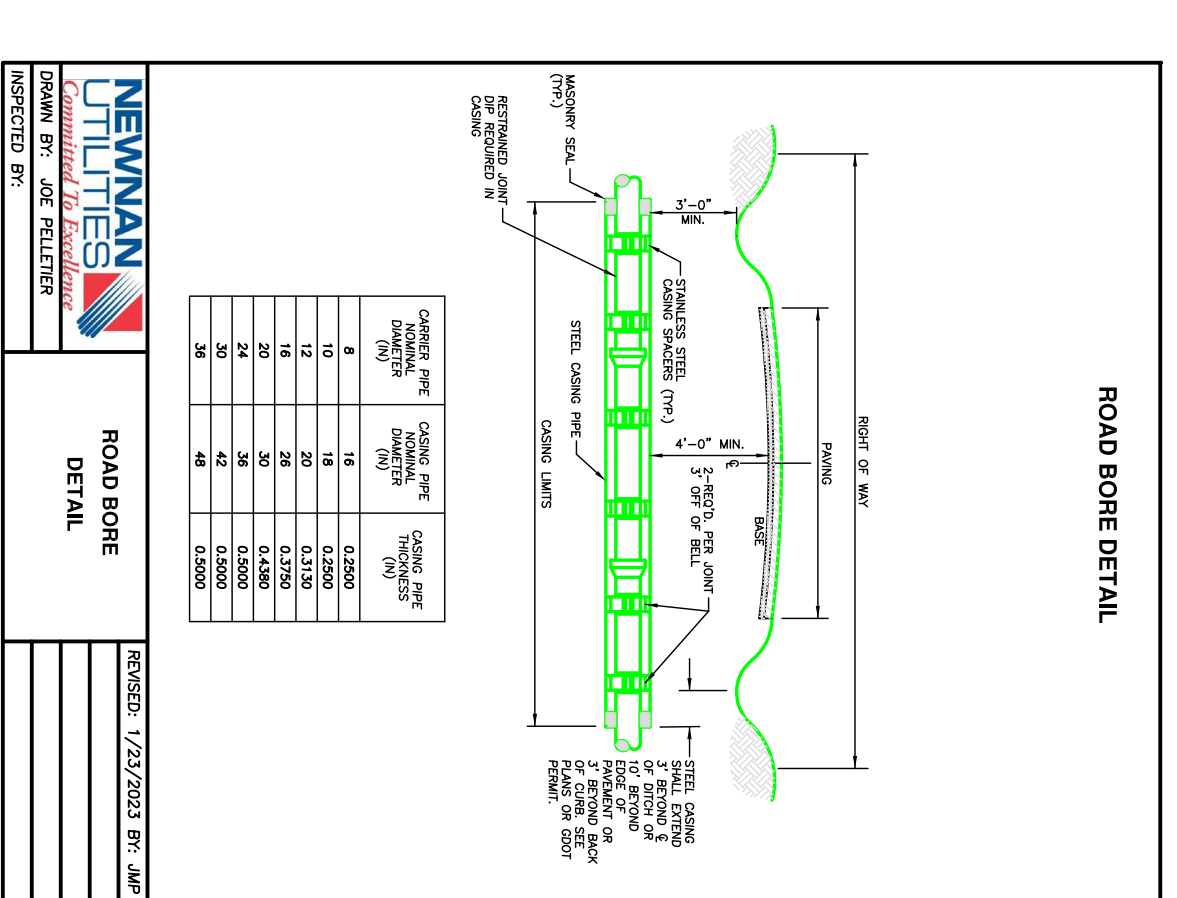
NEWMAN UTILITIES
DUCTILE IRON PIPE BURIAL DETAIL
 DRAWN BY: S. TOLAR
 CHECKED BY:
 REVISION: 1/23/2023 BY: JMB
 SHEET NO. P1-002



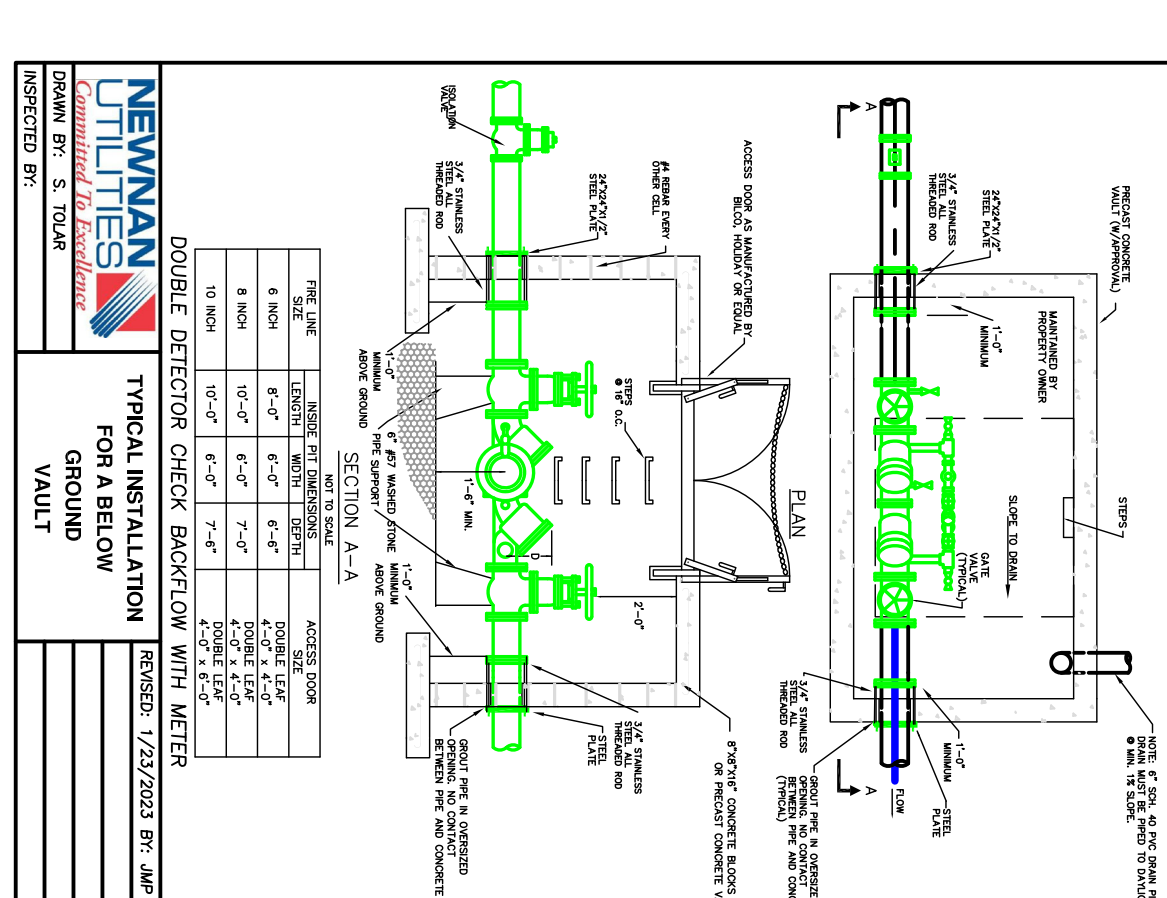
NEWMAN UTILITIES
FIRE HYDRANT ROOFING DETAIL
 DRAWN BY: S. TOLAR
 CHECKED BY:
 REVISION: 1/23/2023 BY: JMB
 SHEET NO. W-008

NEWMAN UTILITIES
CONCRETE BLOCKING TABLE
 DRAWN BY: S. TOLAR
 CHECKED BY:
 REVISION: 1/23/2023 BY: JMB
 SHEET NO. P1-011

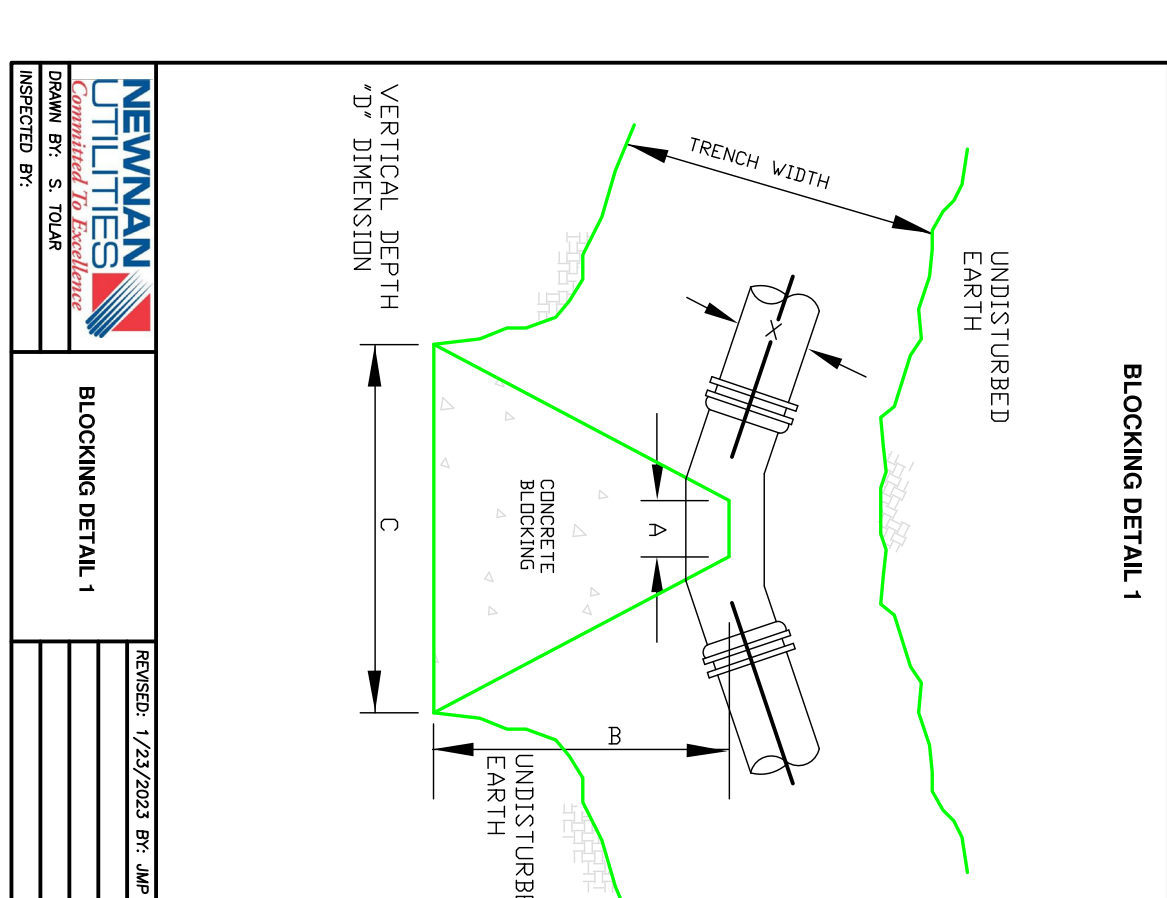
DITL	SIZE	HORIZONTAL CONCRETE BLOCKING DIMENSIONS									
		A	B	C	D	E	F	G	H	I	J
10	12\"/>										
12	12\"/>										
14	12\"/>										
16	12\"/>										
18	12\"/>										
20	12\"/>										
22	12\"/>										
24	12\"/>										
26	12\"/>										
28	12\"/>										
30	12\"/>										
32	12\"/>										
34	12\"/>										
36	12\"/>										
38	12\"/>										
40	12\"/>										
42	12\"/>										
44	12\"/>										
46	12\"/>										
48	12\"/>										
50	12\"/>										
52	12\"/>										
54	12\"/>										
56	12\"/>										
58	12\"/>										
60	12\"/>										
62	12\"/>										
64	12\"/>										
66	12\"/>										
68	12\"/>										
70	12\"/>										
72	12\"/>										
74	12\"/>										
76	12\"/>										
78	12\"/>										
80	12\"/>										
82	12\"/>										
84	12\"/>										
86	12\"/>										
88	12\"/>										
90	12\"/>										
92	12\"/>										
94	12\"/>										
96	12\"/>										
98	12\"/>										
100	12\"/>										



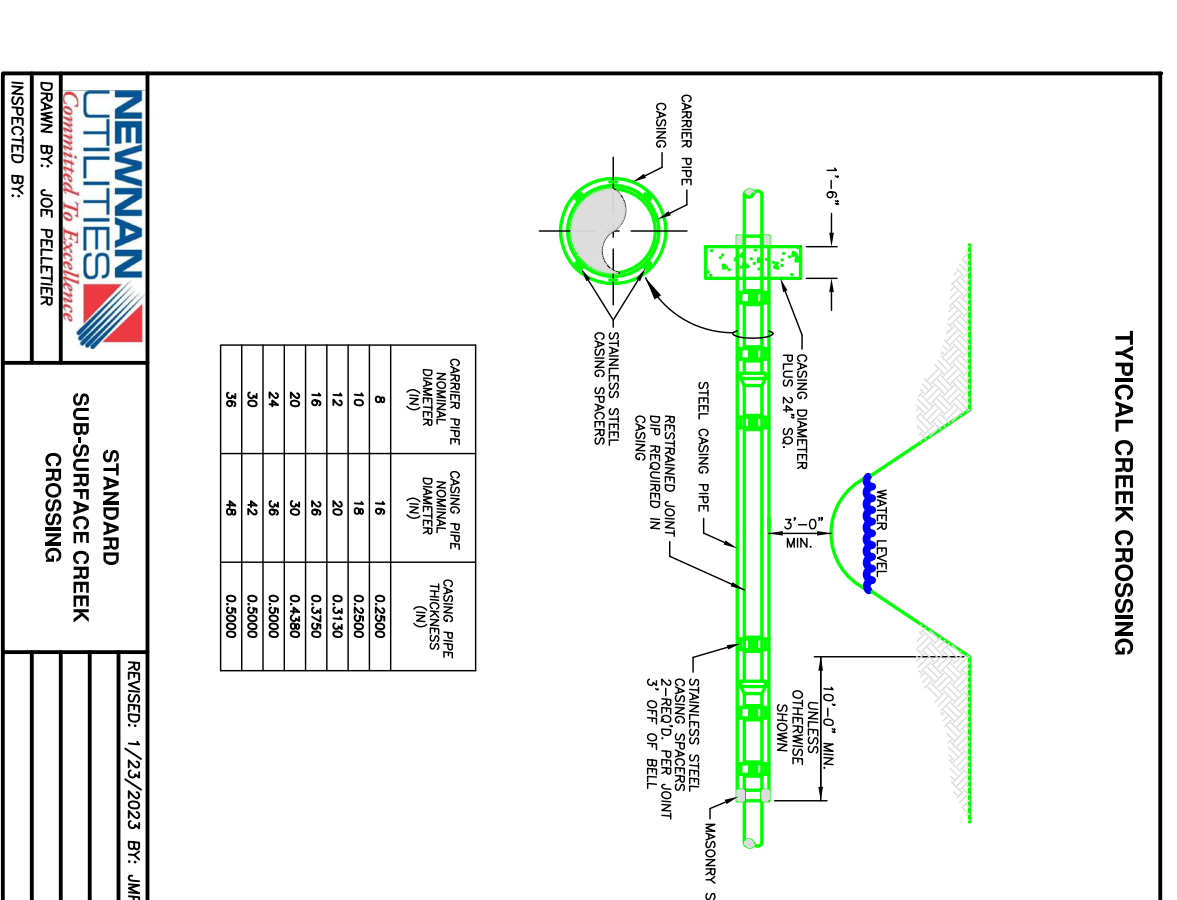
NEWMAN UTILITIES
ROAD BORE DETAIL
 DRAWN BY: S. TOLAR
 CHECKED BY:
 REVISION: 1/23/2023 BY: JMB
 SHEET NO. P1-004



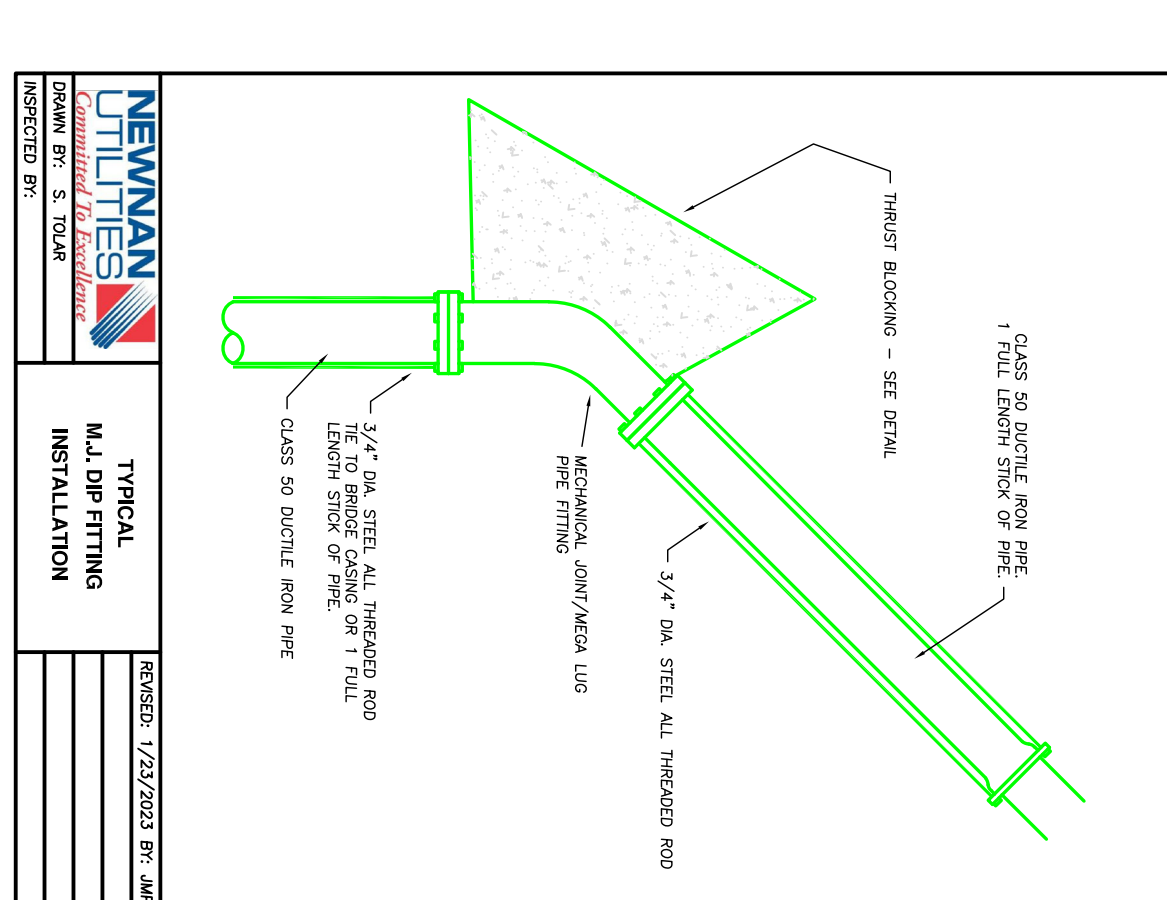
NEWMAN UTILITIES
TYPICAL INSTALLATION FOR A BELOW GROUND DETECTOR CHECK BACKFLOW WITH WATER
 DRAWN BY: S. TOLAR
 CHECKED BY:
 REVISION: 1/23/2023 BY: JMB
 SHEET NO. BF-006



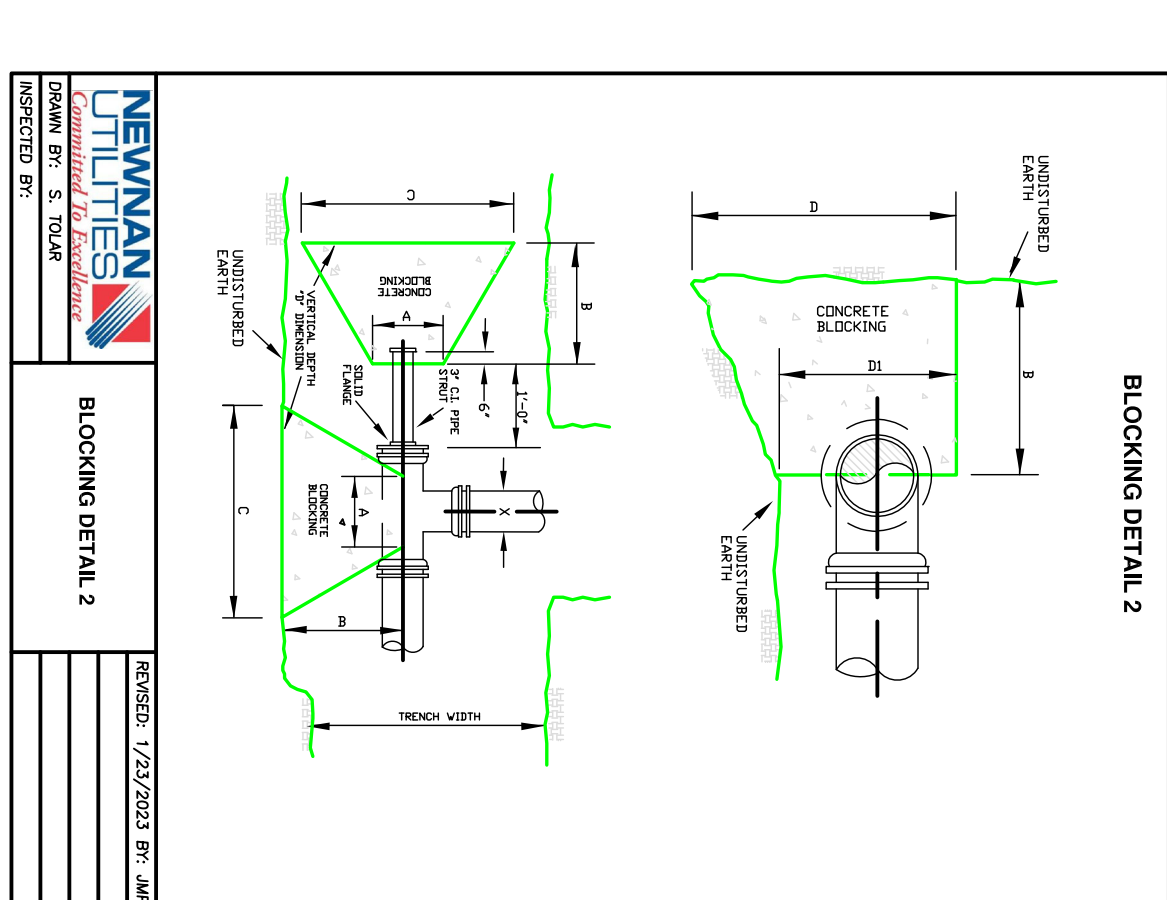
NEWMAN UTILITIES
BLOCKING DETAIL 1
 DRAWN BY: S. TOLAR
 CHECKED BY:
 REVISION: 1/23/2023 BY: JMB
 SHEET NO. P1-009



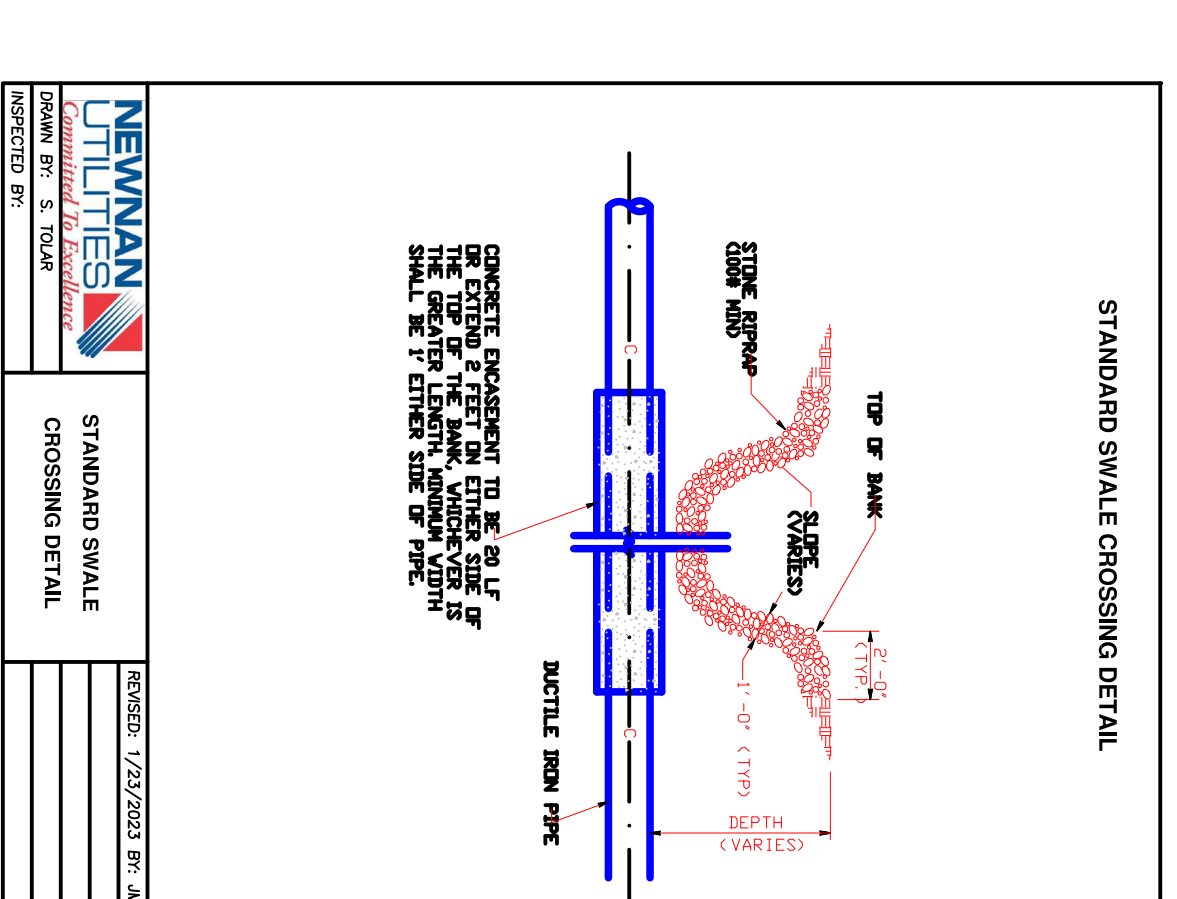
NEWMAN UTILITIES
TYPICAL CREEK CROSSING
 DRAWN BY: S. TOLAR
 CHECKED BY:
 REVISION: 1/23/2023 BY: JMB
 SHEET NO. P1-005



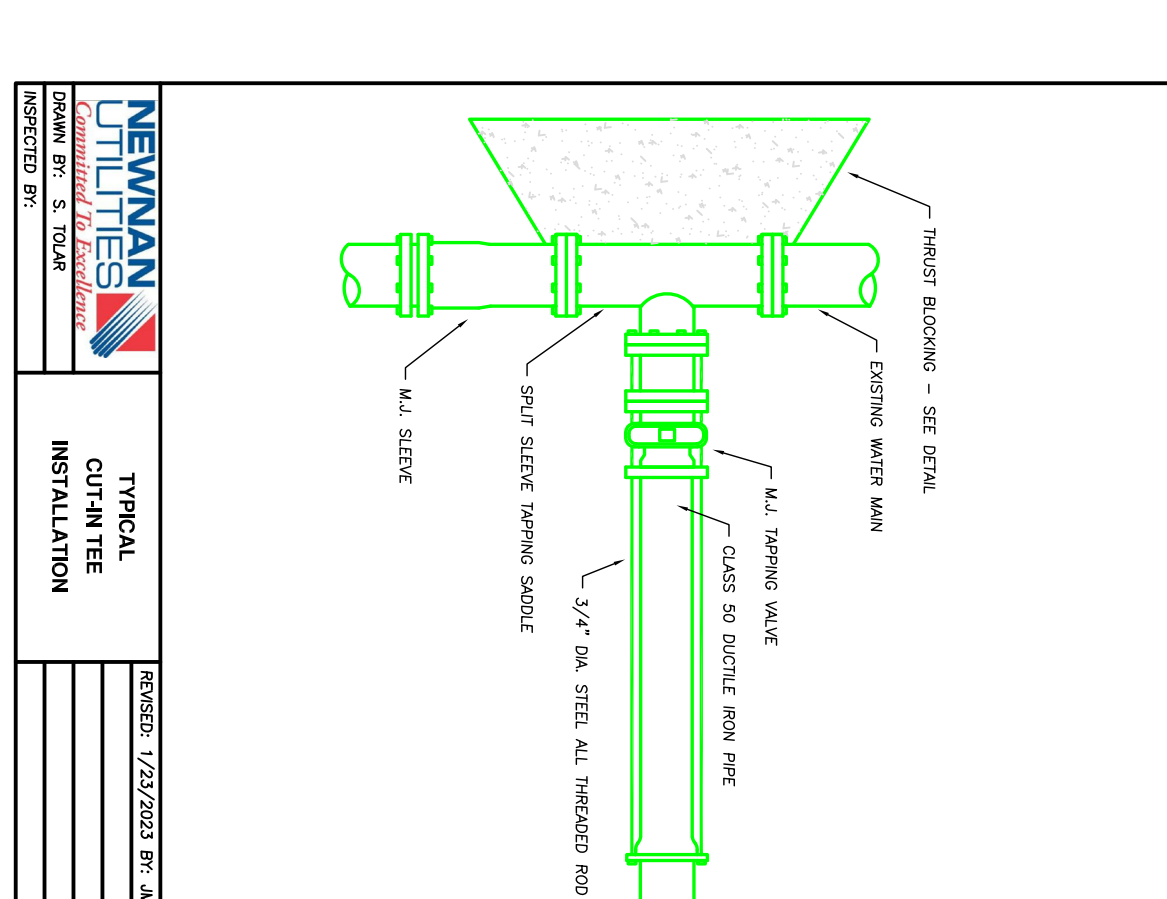
NEWMAN UTILITIES
TYPICAL M.A. TAPPING INSTALLATION
 DRAWN BY: S. TOLAR
 CHECKED BY:
 REVISION: 1/23/2023 BY: JMB
 SHEET NO. W-016



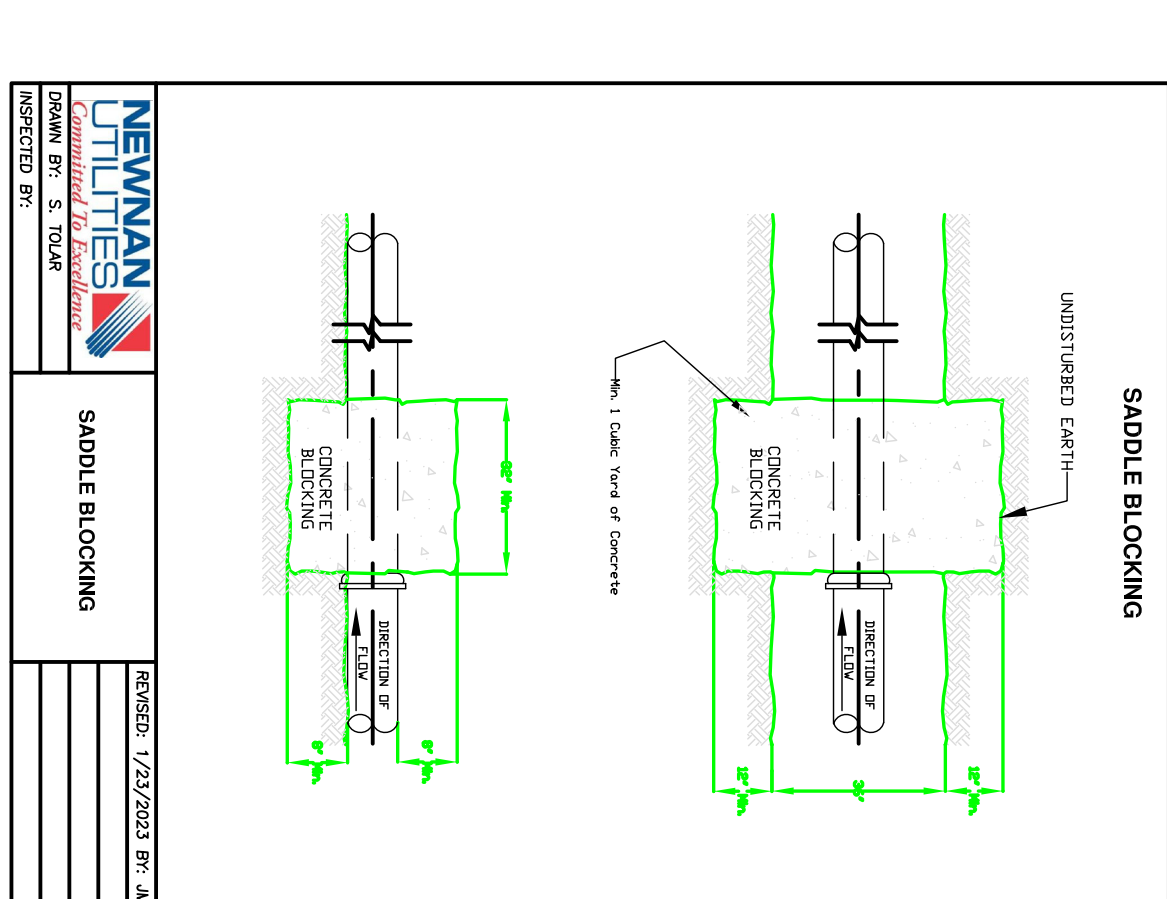
NEWMAN UTILITIES
BLOCKING DETAIL 2
 DRAWN BY: S. TOLAR
 CHECKED BY:
 REVISION: 1/23/2023 BY: JMB
 SHEET NO. P1-010



NEWMAN UTILITIES
STANDARD SWALE CROSSING DETAIL
 DRAWN BY: S. TOLAR
 CHECKED BY:
 REVISION: 1/23/2023 BY: JMB
 SHEET NO. P1-012



NEWMAN UTILITIES
TYPICAL CUT-IN TEE INSTALLATION
 DRAWN BY: S. TOLAR
 CHECKED BY:
 REVISION: 1/23/2023 BY: JMB
 SHEET NO. W-012



NEWMAN UTILITIES
SADDLE BLOCKING
 DRAWN BY: S. TOLAR
 CHECKED BY:
 REVISION: 1/23/2023 BY: JMB
 SHEET NO. P1-013

REVISION	1/23/2023
REVISION	
REVISION	
REVISION	



