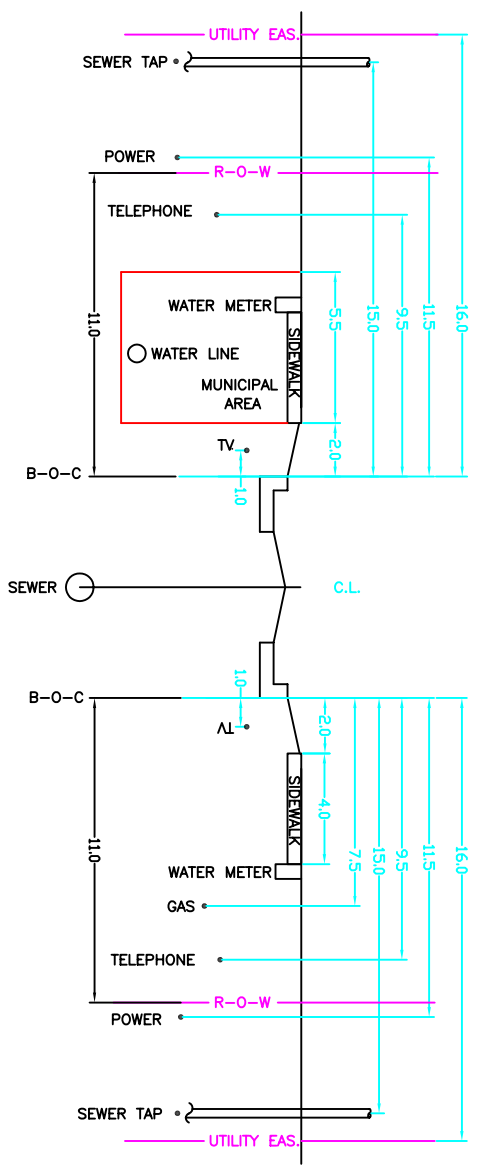
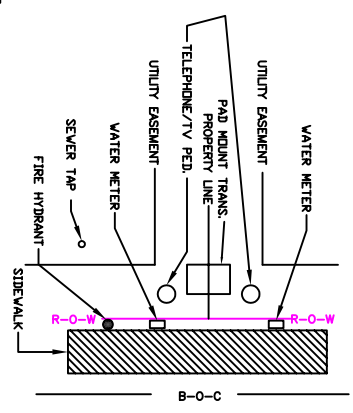


- GENERAL NOTES:**
- 1) GAS AND WATER WILL BE ON OPPOSITE SIDES OF THE ROAD.
 - 2) UTILITY LOCATIONS ARE MEASURED FROM THE BACK OF CURB (B-O-C).
 - 3) POWER, CABLE TV, AND TELEPHONE WILL USE JOINT TRENCHES WHERE PRACTICAL. THE LOCATION SHALL BE THE UTILITY TRENCH FURTHEST FROM THE B-O-C.
 - 4) UTILITY BURIAL DEPTHS:
 WATER MAIN 3 FEET MINIMUM
 WATER SERVICE 3 FEET MINIMUM
 SEWER MAIN 3 FEET MINIMUM
 GAS SERVICE 2 FEET MINIMUM
 POWER 2 FEET MINIMUM
 TELEPHONE 2 FEET MINIMUM
 CABLE TV 1.5 FEET MINIMUM
 - 5) BURIAL DEPTH MEASURED FROM THE TOP OF CURB TO THE TOP OF THE UTILITY.
 - 6) ALL RESIDENTIAL ROADS REQUIRE AN ADDITIONAL 5 FOOT UTILITY EASEMENT AT THE FRONT OF THE LOT.
 - 7) RESIDENTIAL STREET ABOVE GRADE PLAN SIMILAR TO MINOR RESIDENTIAL STREET PLAN.

MINOR RESIDENTIAL STREET 40 FOOT R-O-W



RESIDENTIAL STREET 50 FOOT R-O-W



MINOR RESIDENTIAL STREET ABOVE GRADE PLAN N.T.S.

PROPOSED UTILITY PLACEMENT PLAN

FOR NEWNAN GEORGIA

Sheet	1 / 1
Date	APRIL, 2000
Scale	N/A
Author	N/A
Number/Issue	
Date	

General Notes